



16

15

14

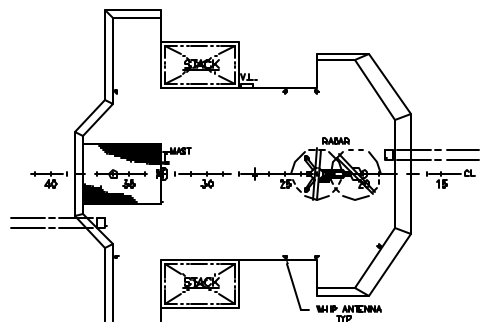
13

12

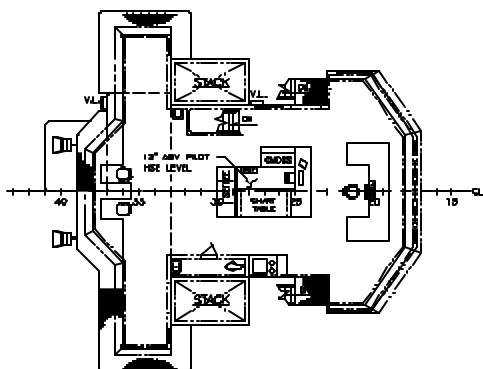
11

10

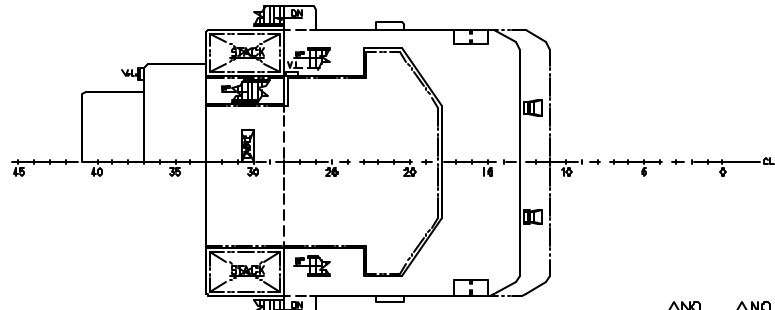
9



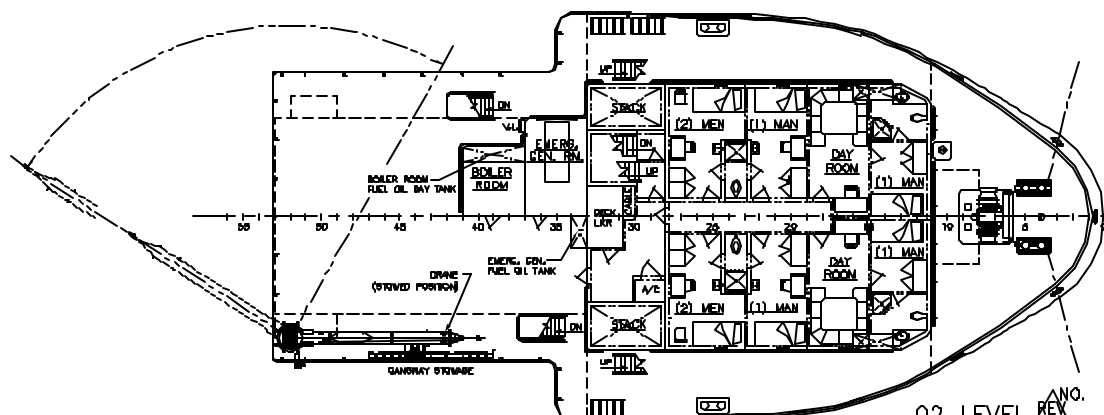
PILOT HOUSE TOP



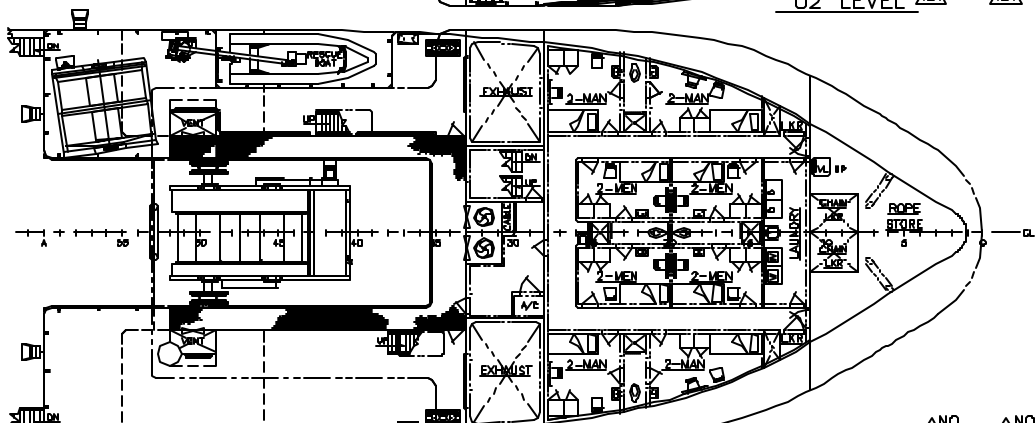
PILOT HOUSE



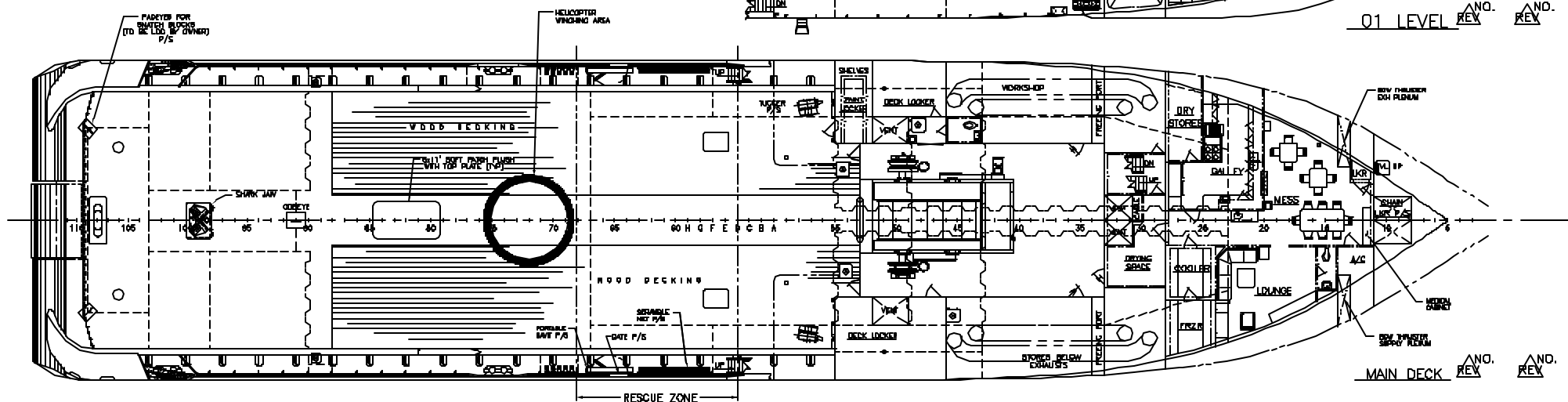
03 LEVEL



02 LEVEL



01 LEVEL



MAIN DECK

REVISION CONT.

REV	DESCRIPTION	DATE	APPVD
SHEET 1			
9.	ADDED TONS APPROVAL IN TITLE BLOCK. PILOT HOUSE TOP	8/15/88	FMA
8.	REVISED; MONITOR PLATFORM PER AS-BUILT DWG S-18; MAST PER AS-BUILT DWG S-22; LOCATION OF SPOTLIGHTS FWD & AFT; ANTENNA ARREST PER AS-BUILT COND.		
7.	REVISED PILOT HSE FWD CONSOLE & COFFEE TABLE PER AS-BUILT COND. // ADDED WINDOW ON FWD WIND BRD P/S PER AS-BUILT DWG S-26; LOC. OF AFT SPOTLIGHTS PER AS-BUILT COND.		
6.	ADDED SPOTLIGHTS PER AS-BUILT COND. 03 LEVEL		
5.	REVISED; ANCHOR WINDLASS, LOCATION OF FWD BITTS, DAY ROOM TABLE, EMERG. GEN DAY TK, AND EMERG. GEN VENT OPENING PER AS-BUILT COND. // ADDED DOOR INTO A/C CLOSET PER AS-BUILT COND. // DELETED ONE LIFERAFT ON (S) SIDE PER AS-BUILT COND. 01 LEVEL		
4.	REVISED; SPOTLIGHTS & CLOSED CHOCK WAS OPEN PER AS-BUILT COND.; LOCATION OF DOOR ON FR. 34 (P) SIDE INTO WINCH HSE WAS ON FR. 44; SIZE & SWIND ON DOOR INTO LKR BTW FR. 11-13; P/S & DOORS LEADING INTO ROPE STORE PER DWG S-26; SIZE & TYPE OF WINCH PER ENO. DEV.		
3.	REVISED; BULLMARK & PIPE RAIL STAN PER AS-BUILT DWG S-17; COBBEYE ORIENTATION PER AS-BUILT DWG S-48; GALLEY & LUGGER SIZE PER AS-BUILT COND.; LOCATION OF DOOR INTO OK LKR (P) SIDE, SWING OF DOOR ON FR. 28, GALLEY DOOR & SOFT PATCH WAS 4x3' PER AS-BUILT DWG S-28; LOCATION OF HELICOPTER WINCHING AREA AFT, CTR ON FR. 72 PER TRANSPORT CANADA LTR CWS 8302 -21488 DTD MAY 7, 1988; SIZE & TYPE OF WINCH & LOCATION OF DRUMS FORWARD AND MAIN OK HEAD BTW FR. 43-48 PER ENO. DEV. // ADDED RAISED WT HATCHES IN OK LKR (S) SIDE IN ALCOVE ON (P) SIDE & FR. 34 P/S PER AS-BUILT DWG S-26; COFFEE TABLE OUTSIDE GALLEY, DOOR IN A/C SPACE AND FREEDING POINTS PER AS-BUILT COND.; CRTG IN WINCH AREA PER ENO. DEV.; SAFETY CHAIN PER AS-BUILT DWG S-18.		
2.	REVISED; INDICATION OF WT SLIDING DOORS ON FR. 87 & 103 PER AS BUILT DWG S-28. OUTBOARD PROBE		
1.	REVISED; HANDRAIL ON PILOT HSE TOP & ON 03 LVL AROUND BOW THRUSTER SUPPLY VENT PER AS-BUILT DWG S-18; BLWK PIPE RAIL, FREEDING PORTS & CLOSED CHOCK WAS OPEN PER AS-BUILT DWG S-17; PIPE PENETRATING PER AS-BUILT DWG S-26; SPOTLIGHT SIZE & LOCATION, ANTENNA ARREST ON PILOT HSE TOP, AND 01 LVL DOOR ON FR. 34 PER AS-BUILT COND. // ADDED; SPOT-LIGHTS ON 03 LVL, STACK LOGO, VESSEL NAME ON FOCSLE BUNK AND EMERG. GEN DAY TK PER AS-BUILT COND.; ANCHOR DEL PLATE PER AS-BUILT DWG S-20; MAST SUPPORT PER AS-BUILT DWG S-22. // DELETED ONE LIFERAFT ON (S) SIDE PER AS-BUILT COND.		
PILOT HOUSE TOP			
21.	REVISED NUMBER & LOCATION OF SPOTLIGHTS.	3/31/88	FMA
PILOT HOUSE			
20.	REVISED FWD & AFT CONSOLES.		
19.	ADDED; BOILER ROOM; RESCUE ZONE ILLUMINATION; PILOT CHAIRS (PER C.D. # 7).		
03 LEVEL			
18.	DELETED DECK OVERHANG.		
17.	ADDED BOILER ROOM.		
02 LEVEL			
18.	ADDED; BOILER ROOM BTW FR. 37-41; BOILER ROOM FUEL OIL DAY TANK (PER DWG S-14).		
15.	REVISED; HANDRAILS AROUND EMERG. GEN ROOM; LOCATION OF EMERG. GEN FUEL OIL TANK (PER DWG S-14); NUMBER OF LIFERAFTS P/S.		
01 LEVEL			
14.	REVISED; LOCATION OF DOOR ON FR. 34 TO FR. 44 LEADING INTO WINCH HOUSE, STED SIDE ONLY; STORAGE REEL; RESCUE BOAT & DAWT.		
13.	DELETED WATER HEATERS IN LAUNDRY.		
12.	ADDED RESCUE ZONE ILLUMINATION.		
MAIN DECK			
11.	DELETED; FLUSH TOWING PINS, P/S; SELF CONTAINED CHSTING 4 MAN TABLE IN LOUNGE (PER C.D. #3).		
10.	ADDED; PORTABLE DAWT, P/S; MEDICAL CABINET		
7.	ADDED; SEA CHEST ON PORT SIDE ONLY BTW FR. 77-80; BHD AROUND BOW THRUSTER CUTOUTS BTW FR. 12-22.		
DOUBLE BOTTOM PLAN			
6.	REVISED #7 BALLAST/DRILL WATER BULKHEADS BTW FR. 82-90.		
5.	ADDED BULKHEADS FOR AFT THRUSTER, BTW FR. 90-99.		
REVISIONS CONT. FROM SHEET 1			
SCALE:	SCALE	DATE	DATE
DRAWN BY:	DRAWNBY	CHK'D BY:	CHECKEDBY
HULL NO.	HULLNO	JOB NO.	JOBNO
		DWG NO.	DWGN0
			INT-030588
		REV	REV